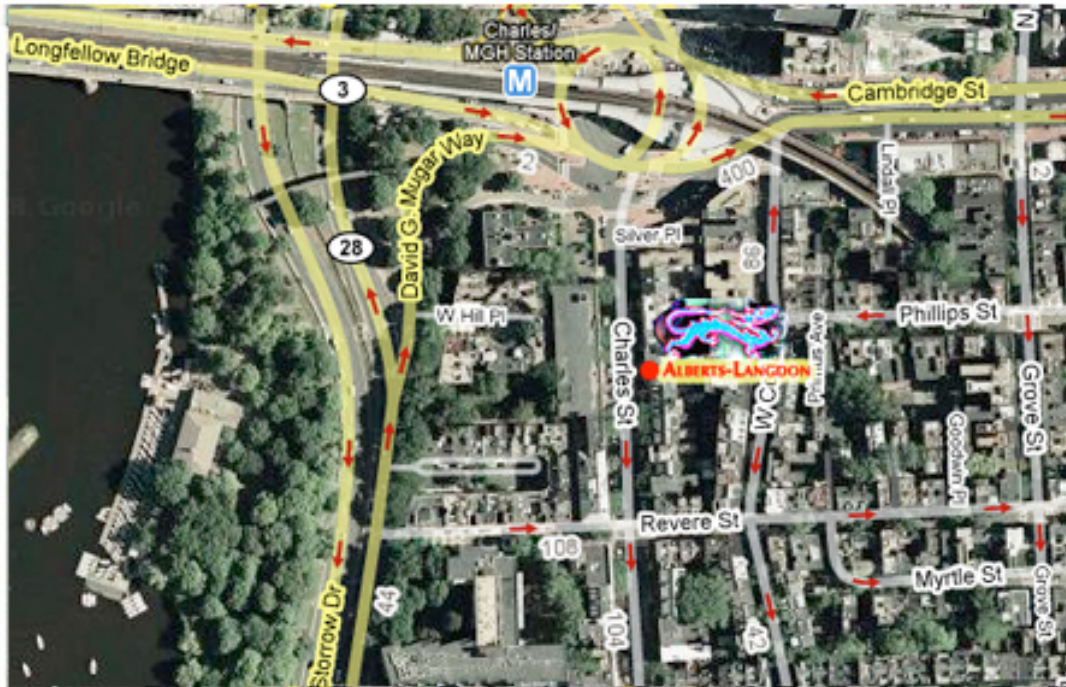


## Directions to Alberts-Langdon, Inc.

135 Charles St., Boston, MA 02114

Tel: 617. 523. 5954



### **Public Transportation (MBTA)**

We are located only a few blocks away from the Charles-MGH Station on the MBTA (Subway) Red Line. As you exit the station, veer right and cross the street at the traffic light—Charles Street will be right in front of you. The gallery is just one block down the street on the left, right next door to Judith Dowling's Gallery.

### **Driving**

#### > From the Mass Pike (Route 90 Eastbound)

From the Mass Pike take the *Cambridge Exit* to *Storrow Drive East*. Near the end of Storrow Drive, take the *Government Center Exit* and get in the right lane. At the traffic light, turn right onto Charles Street (a one way street).

#### > From Memorial Drive

From Memorial Drive take the *Downtown/Government Center Exit* and travel over the Longfellow Bridge across the Charles River. As you get off the bridge turn right on *Main Street* Again, and stay in the right lane as you approach the traffic signal. Bear right onto *Charles Street* (a one way street). We are located two blocks down on Charles Street, on the right.

**Parking**

There is limited metered public parking available on Charles Street. Underground parking is available at the Charles Street Garage (Entrance at the top of Charles Street) for a fee. This lot has designated disability parking.